

LOWELL CLASSIC GRAVEL 10/26/2024

SUMMARY:

This is the Sheriff's Office operation plan for the Lowell Classic Bike Race 2024.

LOCATION:

This event is taking place in Keene, Otisco, Orleans and Easton Townships in Ionia County.

DATE AND TIME:

All staff working the event will report to the Sheriff's office on 10/26/2024 at 0900.

The event will take place on 10/26/2024 at 1000 to approximately 1400.

SUPERVISOR IN CHARGE:

Sgt. Straubel (3407), Ionia County Sheriff's Office his number is (616) 902-2716.

COMMUNICATIONS:

Radio communications between ground units will take place on 34SPEV1.

All units will check in with Sgt. Straubel. Sgt. Straubel will then advise dispatch.

All emergency radio traffic will take place with central dispatch on 34PD911.

The race Coordinator is Marty Mrozinski his number is 616-558-6407.

TRACKING OF HOURS:

Each unit will send an e-mail to Sgt. Fredrick Straubel at fstraubel@ioniacounty.org stating the hours they worked.

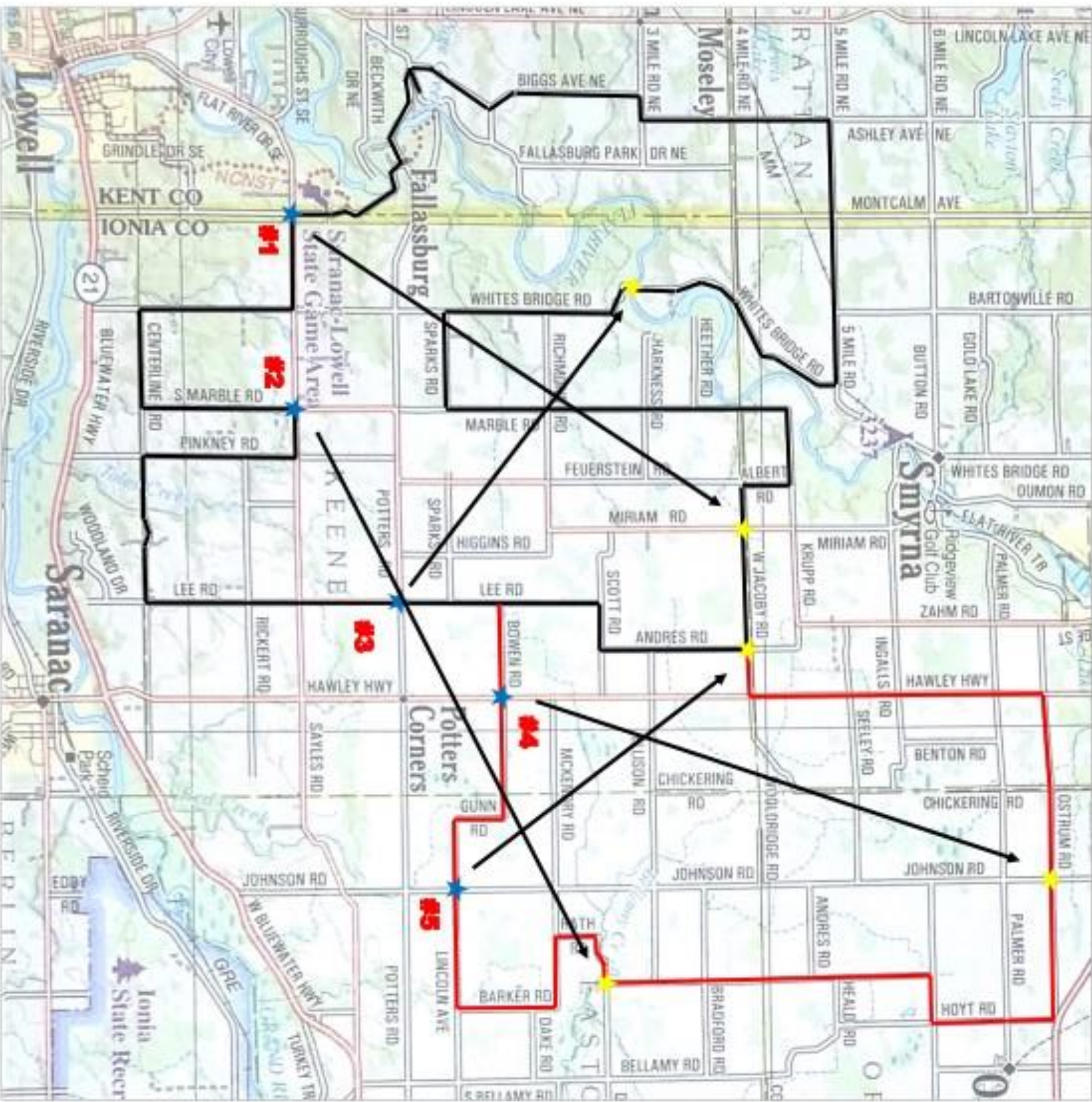
SAFETY:

Vehicles equipped with overhead lights will have lights activated during event. Traffic vest will be worn. Please make sure motorists have advanced warning of your location.

TRAFFIC POINT ASSIGNMENTS:

- 1) Straubel-
 - a. Start At: Sayles/Montcalm @ 10:00 AM
 - b. Move To: Jacoby Rd/Miriam @ 10:45 AM
- 2) -
 - a. Start At: Marble/Sayles @ 10:05 AM
 - b. Move To: Dildine/Graff Rd @ 10:45 AM
- 3) -
 - a. Start At: Potters/Lee @ 10:20 AM
 - b. Move To: Whites Covered Bridge @ 11:10 AM
- 4) -
 - a. Start At: Bowen/Hawley @ 10:25 AM
 - b. Move To: Ostrum/Johnson @ 11:05 AM
- 5) -
 - a. Start At: Lincoln/Johnson @ 10:35 AM
 - b. Move To: Jacoby Rd/Andres @ 11:20 AM

*The race coordinator has requested that we stay ahead of the leaders. The slower traffic will be instructed to stop and clear any intersections that do not have traffic control. All personnel will arrive at their point by 10:00am. The listed times are approximate arrival of the first riders. If the first riders are ahead of schedule we will shift movement times.



Event Date: 10/28/23

Start Time: 10:00 am

Lowell Race Course Map

**Start and Finish at
Fallasburg Park**

**Two race distances
39 & 56 Mile**

**39 mile is marked in
black**

**56 mile is marked in
black and red**

**Both distances run
counter clockwise**